

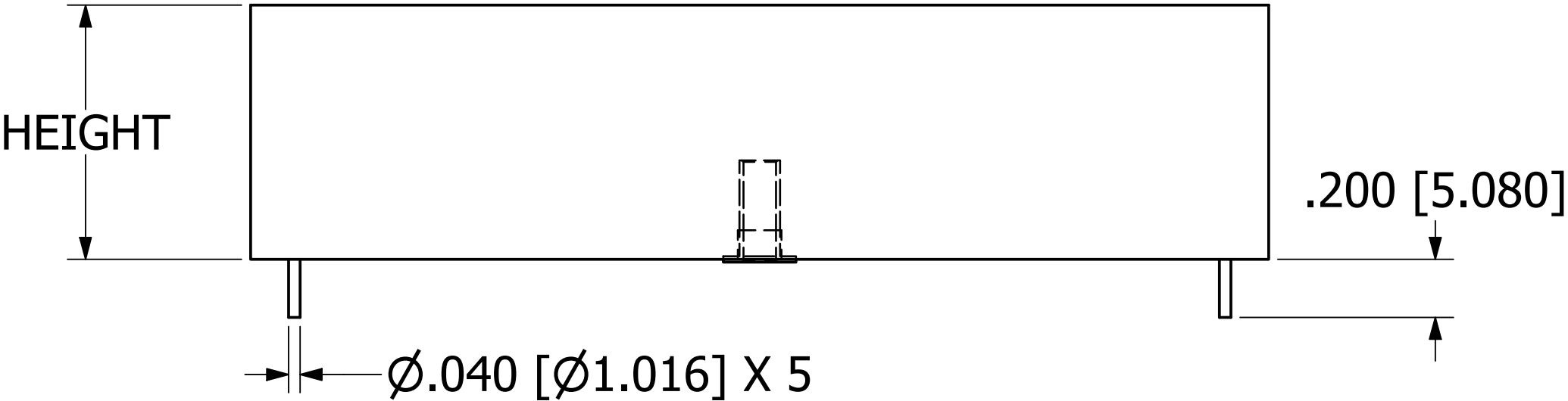
4

3

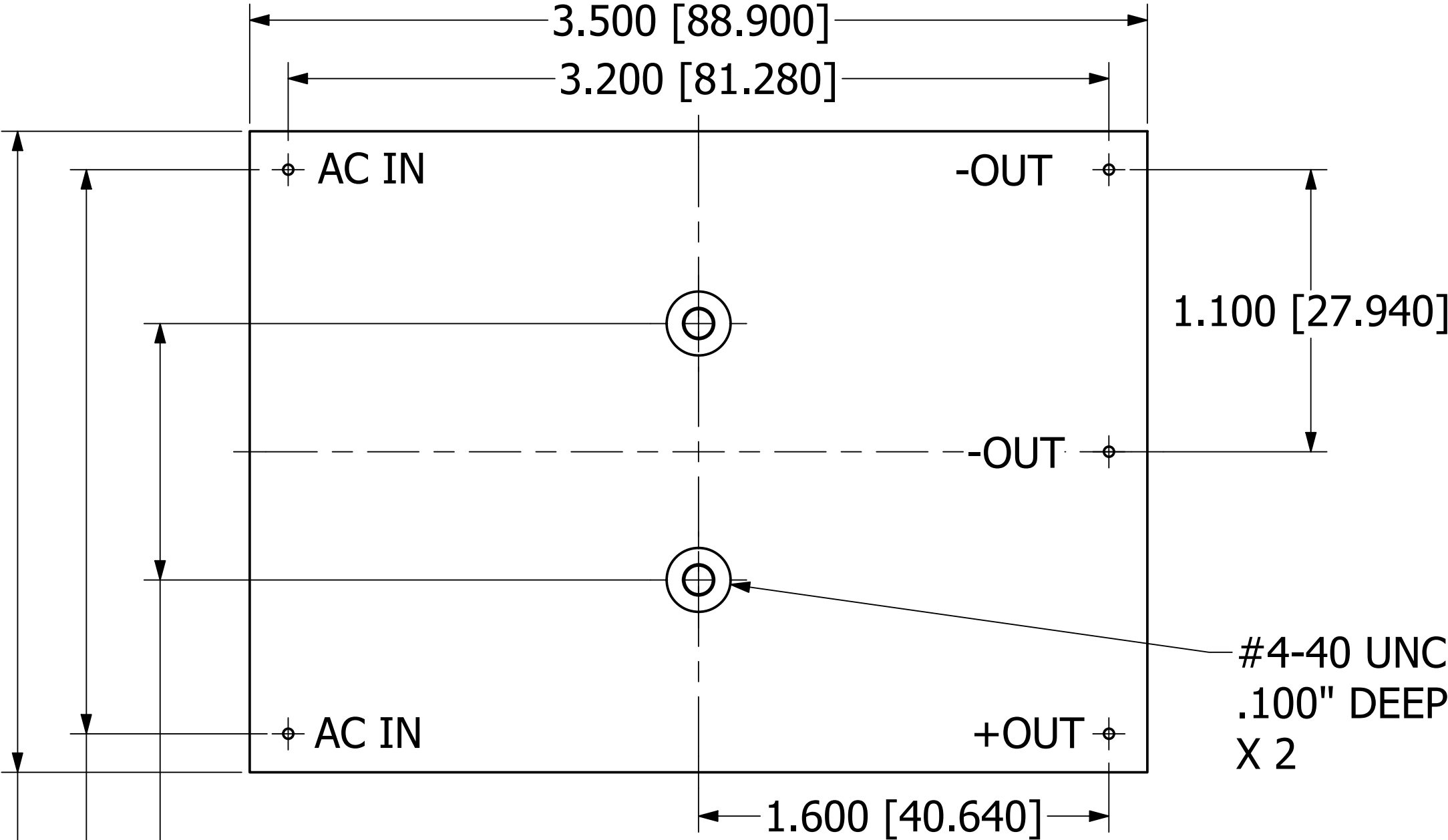
2

1

- NOTES**
- a. ALL DIMENSIONS ARE IN INCHES, [ ] = MM
  - b. THE RECOMMENDED TORQUE FOR MOUNTING SCREWS IS 3-5 IN-LBS



PACKAGE	HEIGHT
L1	.875 [22.225]
L2	1.250 [31.750]
L3	1.560 [39.624]



**BOTTOM VIEW**



#4-40 UNC  
.100" DEEP MIN.  
X 2

1.000 [25.400]  
2.200 [55.880]  
2.500 [63.500]

**PROPRIETARY AND CONFIDENTIAL**  
THE INFORMATION CONTAINED IN THIS DRAWING IS THE SOLE PROPERTY OF  
PICO ELECTRONICS INC. ANY REPRODUCTION IN PART OR AS A WHOLE WITHOUT THE WRITTEN  
PERMISSION OF PICO ELECTRONICS INC. IS PROHIBITED

DRAWN	P.PALUCH	<b>PICO</b> Electronics 143 Sparks Ave Village of Pelham, NY 10803			
CHECKED	H. VIDAURRE				
QA		<b>SERIES LAC - SINGLE</b>			
MFG					
APPROVED		SIZE		DWG NO	REV
REVISION DATE	06/06/2023	C			1
		SCALE	NTS	www.picoelectronics.com	